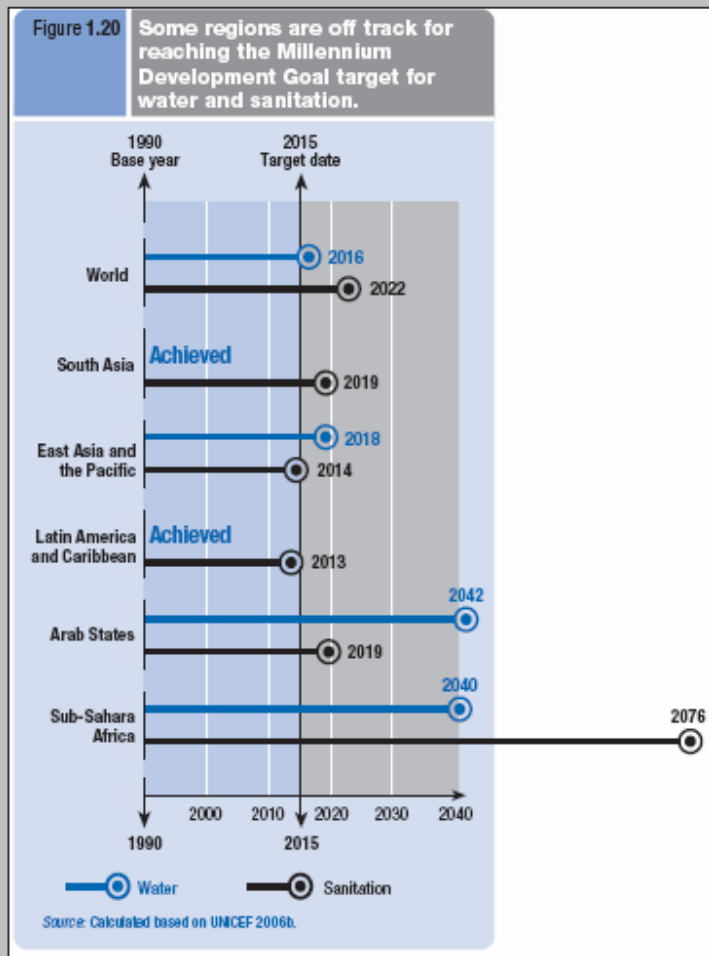


A Sanitation and Water Message for the G8

olivercumming@wateraid.org



A Sanitation & Water Crisis



Agreement of MDG target for W&S has not translated into progress

1 Billion People – No Water

2.5 Billion People – No Sanitation

Africa at the heart of this crisis

We are failing and without an extraordinary effort the MDGs will not be met

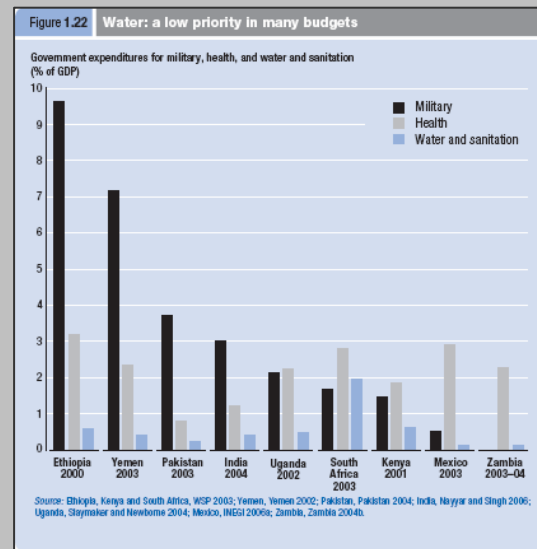
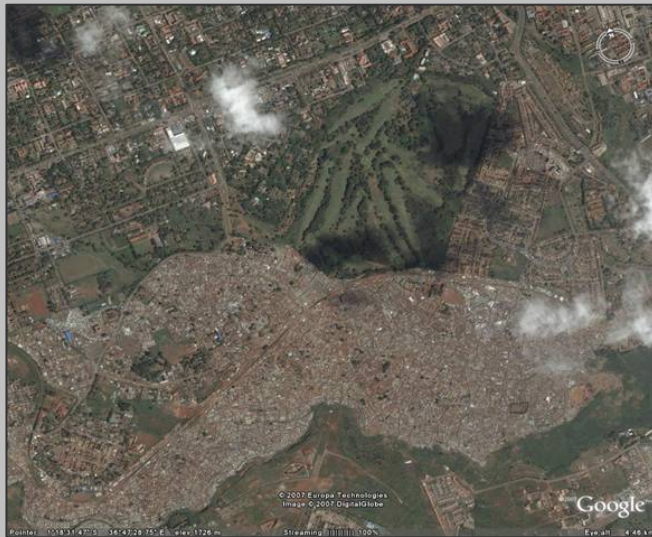
A Development Crisis

Constraining progress in health,
education and economic growth

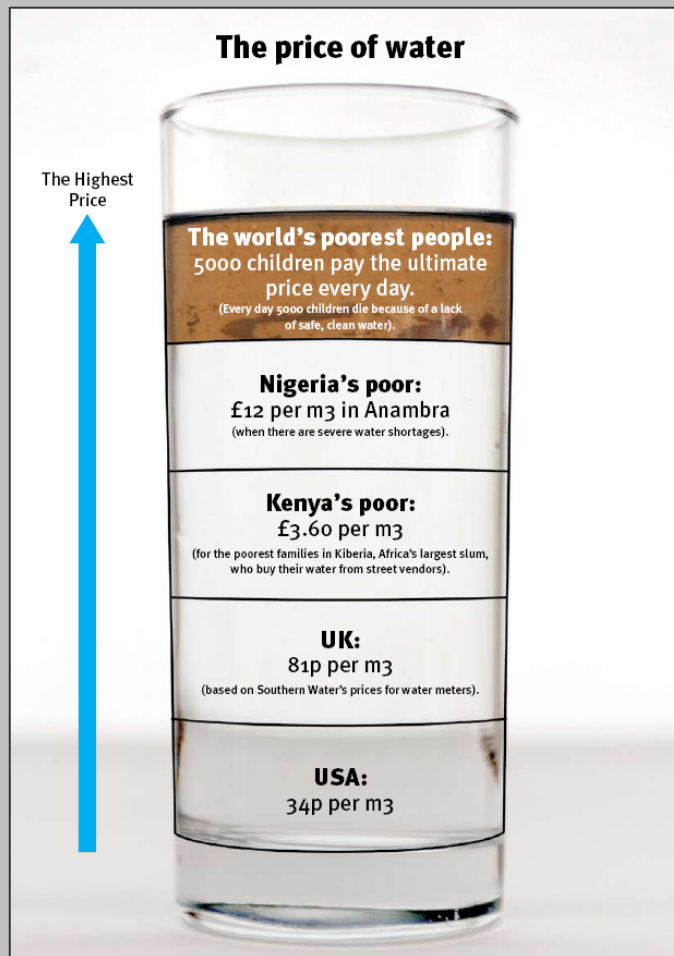
- MDG 1 – \$40 billion p.a. / 8% GDP
- MDG 2 – 272 million school days p.a.
- MDG 3 – preventing girls' attendance
- MDG 4 – *at least* 5,000 children
everyday

A crisis born of political neglect

- Not driven by a scarcity of natural or financial resources...
- But by government failure...
- At the national and the international level



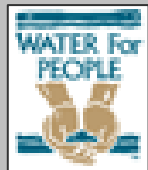
Characterised by inequity



- The poor are the most affected...
- Women and children who carry the greatest burden...
- Of disease, indignity and loss of opportunity

End Water Poverty

1. International
2. Broad-based
3. Targeting governments
4. For government action



2008 – A last best opportunity

1. The International Year of Sanitation
2. The G8 will meet in Japan – a donor champion
3. Japan committed to water and sanitation on agenda
4. African government commitment and dedicated AU Summit

Beyond Evian... G8 2008

INTERNATIONAL

- A global **action plan**
- A global **taskforce**
- A **commitment** that “no credible costed national plan should fail for lack of financing”

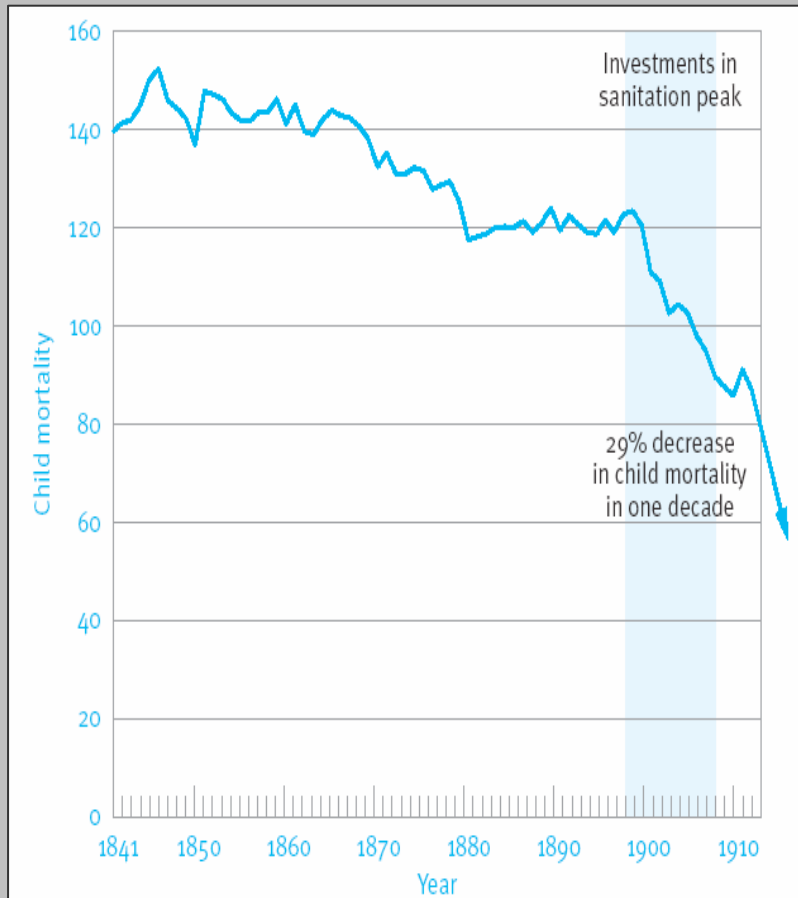


NATIONAL

- One coordinating body, one plan, one monitoring framework
- Necessary financing delivered through transparent budget lines



Historical Experience



Historical experience of G8 nations:

- Investments in sanitation and water drove development
- Political will and leadership critical to progress

The G8 2008 can deliver the necessary political commitment to deliver on the MDG promise

G8 Japan Sanitation and Water for All

www.endwaterpoverty.org

